

The Auto Documented Cylinder

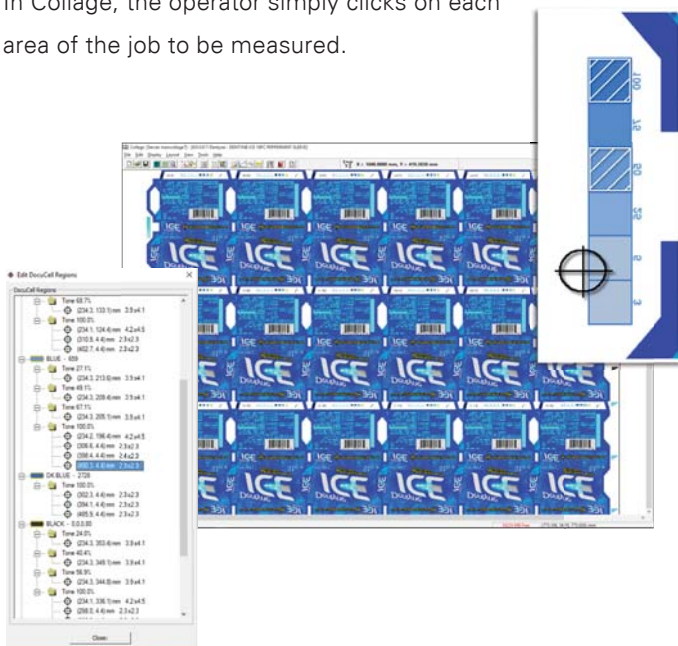
DOCUCELLTM
CAPTURING SYSTEM

Automate the process

Quality control is essential. If you are manually measuring densities on the cylinder to be sure the engraving matches the image data, you know this is a time-consuming process. OHIO now automates this for fast, easy and automatic quality control.

Point and Click

In Collage, the operator simply clicks on each area of the job to be measured.



Engrave

The engraver automatically takes cell pictures and measures cell sizes on the fly, then records the information.

Birth Certificate

The cell size information is stored and can be found on the cylinder Birth Certificate.

Option for Spectrum and Prism Prime engravers. Requires Collage 4.3.13+

SPECTRUM Cylinder Report		Target: Gravure_A
DocuCell Images		
Location: 27 Percent: 100.0 Measure: 124.4	Location: 95 Percent: 100.0 Measure: 124.8	Location: 100.0 Percent: 100.0 Measure: 124.3
Location: 85 Percent: 100.0 Measure: 127.6	Location: 81 Percent: 100.0 Measure: 124.1	Location: 82.0 Percent: 100.0 Measure: 123.2

GRAVURE Page 3 of 6



The Auto Documented Cylinder

VITAL PROOF MULTI-COLOR SYSTEM

A Revolutionary Idea?

Imagine no more proof press...

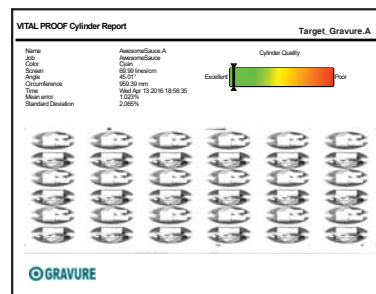
Approval before printing is the goal. The patented Vital Proof System uses the feedback system of the highly accurate Vision engrave head and compares the actual (i.e., measured) engraved result with the original Collage data.

How it works

The Collage operator creates the job then sets it Ready to Print as usual. The engraver operator selects the first cylinder of the job and starts engraving.

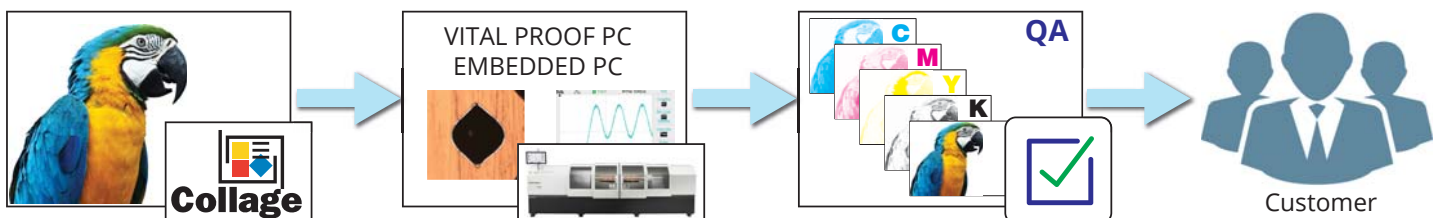
The Vital Proof computer in the engraver digitizes the engrave depth and width signals, and begins constructing the engraved-image data as a grayscale image. This image can be viewed on the engraver monitor, alternating between the standard real-time display and the Vital Proof display. The image is saved back to the Collage computer. This is repeated

for all cylinders of the job. When all cylinders have been engraved, the composite image can be viewed on the Collage monitor. The cylinder image with information is available on the Birth Certificate.



Can the Auto-Documented Cylinder replace the proof press? Maybe not 100% but typically "Yes." The Auto-Documented Cylinder feeds two aspects all customers desire: lower cost and faster delivery.

Option for Spectrum and Prism Prime engravers. Requires Collage 4.3.13+



The Auto Documented Cylinder

DASHBOARD ENGRAVER MONITORING

Managing Production

At A Glance

The OHIO Dashboard puts all the numbers right in your hands so you can manage production efficiently from anywhere. . . on your desktop, your tablet or even your smart phone. If your device has a web browser, you can check on your engravers at any time, from anywhere!

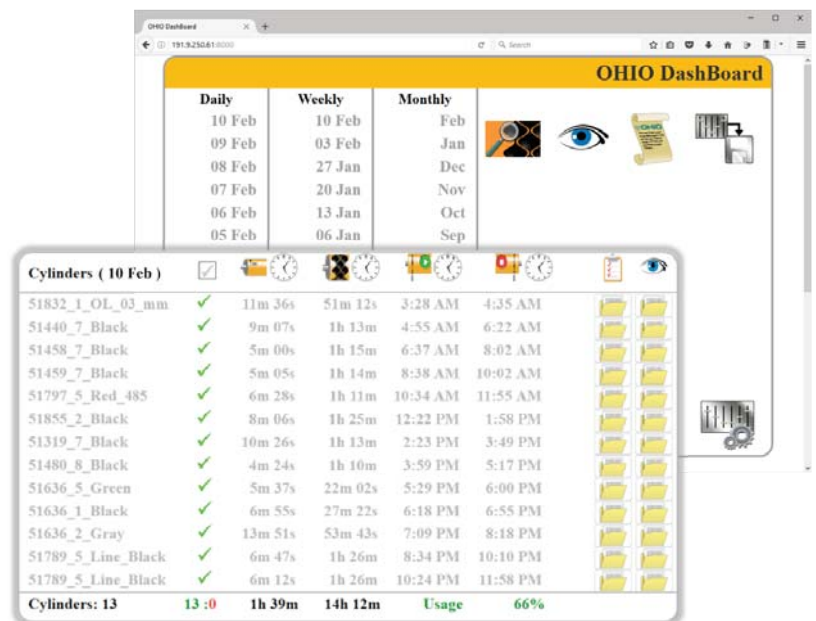
The exclusive OHIO Dashboard lets you see a summary of what has been engraved over the past day, week or month.

Even cylinders with faults are listed so you can check on the problem and solve it.

The summary shows the percentage of time your engraver was engraving, proving just how productive the engraver is.

Daily reports can be emailed to you.

Standard for Spectrum and Prism Prime engravers. Requires Fedora 20



The Auto Documented Cylinder

CYLINDER **BIRTH** **CERTIFICATE**

All the Information



To make good decisions, you first need good information.

OHIO'S Auto Documenting Engravers provide information conveniently gathered on the Cylinder Birth Certificate automatically produced for every cylinder engraved. The Enhanced Birth Certificate now includes DocuCell and Vital Proof information.

OHIO's engravers with the stable and reliable Vision 3 engrave head are well known for the superior repeatability of cylinder engraving. The Birth Certificate provides information to assist, with standard information on screens, angles and stylus.

The Birth Certificate includes test cut and midtone results, with pictures and data, as well as the Stylus Profile information.

SPECTRUM Cylinder Report Target_Gravure_A

DocuCell Images

Location	Percent	Measure
27	100.0	125.4
10	100.0	124.5
1	100.0	124.2
28	93.0	137.6
11	90.0	134.1

VITAL PROOF Cylinder Report Target_Gravure.A

Name	AwesomeSauce.A
Job	AwesomeSauce
Color	Cyan
Screen	65.50 lines/cm
Angle	45.01°
Circumference	99.20 mm
Time	Wed Apr 13 2016 18:56:35
Mean error	1.025%
Standard Deviation	2.050%

Cylinder Quality: Excellent (Green) to Poor (Red)

Vital Proof and DocuCell are options on Spectrum and Prism Prime engravers. Requires Collage 4.3.13+