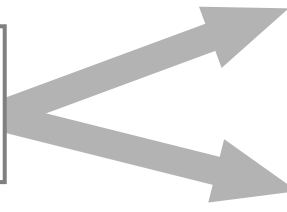


Collage-Hell Workflow



About Hell Match and Hell Output

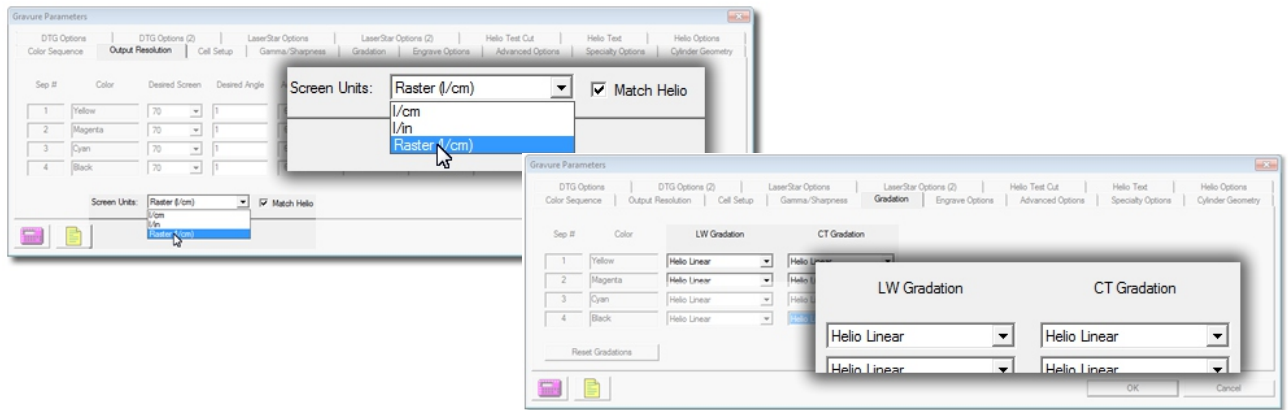
Hell Match is used when *some* cylinders of one job will be engraved on a specially-configured OHIO engraver and some on a Hell engraver; the cylinders must be compatible so the printed result is correct. When Hell Match is turned on, Collage and the OHIO engraver automatically adjust the screens so that Hell screens are used when the job is engraved on the OHIO engraver.

The magic of the Hell System allows the OHIO machine to place the same exact number of cells as the Hell engraver both around the circumference and along the axis. The result is rasterized dots which do not moire.

Hell Output is used when *all* cylinders of one job will be engraved on a Hell engraver. At output time, Collage's Tiff Generator creates the tiff files, the fast advance files, and the job tickets. These files are placed on the Hell computer and are available to the Hell operator to engrave. The HelioDisk software is not used at all.

The Hell Workflow with Collage & Gamma/Gradation

To engrave cylinders on an OHIO engraver so they match cylinders engraved on a Hell engraver, select the Hell Match checkbox on the Gravure Parameters, Output Resolution page. The Hell Match function causes Collage to use a specific set of screens and angles designed to engrave cylinders on an OHIO engraver just like a Hell engraver. Additionally, select the desired Hell Gradation. You can import Hell Gradations into Collage or create new ones with the Collage Gamma/Gradation Editor.



Hell Match is available on OHIO Spectrum and Prism engravers only. Requires Collage version 4.3 or higher. Hell Output is available with Collage Layout Software version 4.0 or higher.

Collage-Hell Workflow

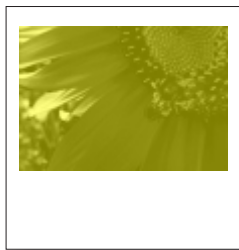


Mixing Cylinders From One Job
Engraving on both OHIO and Hell machines

Black



Yellow



YK



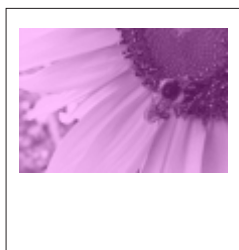
Hell Match

OHIO Gamma
for Hell Match

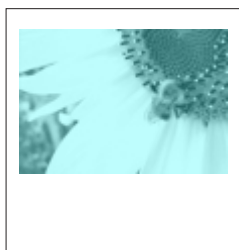
OHIO Engraver



Magenta



Cyan



MC



Hell Output

Hell Gradation

Hell Engraver

