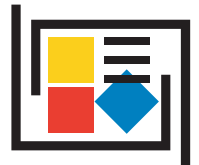


COLLAGE



Layout System for Gravure

Collage has been the premier layout software for the packaging and specialty printing industry for many years.

Create layouts visually in full color quickly and easily. Import images from any design system in PDF, PostScript or even TIFF. The industry standard Xitron Navigator High-Resolution RIP converts the design image into Collage native format, a highly compact format that reduces the space needed for archiving and improves transfer speeds. TIFF images can be imported natively.

Use Collage to step-and-repeat an image across and around the cylinder, or work with full-up images. Rotate, mirror, nest or stagger images easily. Tools to improve image quality are built in, such as gamma and sharpness curves. Proof to any Windows wide-format printer on the network.

All you need is one Collage station and an engraver to get started. Collage grows with you – the Collage station can support up to four engravers. With the optional Hell Output module, use Collage to create all the files needed to engrave on a Hell engraver. Perfect for the mixed shop.

The optional tranScribe and Hybrid systems provide unparalleled improvement to nearly any image for nearly laser-like quality. We continue to develop new features for Collage, such as:

Full-up Workflow Toolkit — In a fully-stepped-and-repeated image in Collage, you can now add selective areas to one image with the gamma, sharpness and Hybrid settings you need. Collage automatically copies those settings for every repeat of the image.

Archive Manager Automation — Take some of the drudgery out of a critical task. Specify what jobs will be archived using several criteria and when to start. Collage will automatically archive jobs for you to the networked location you select.



COLLAGE

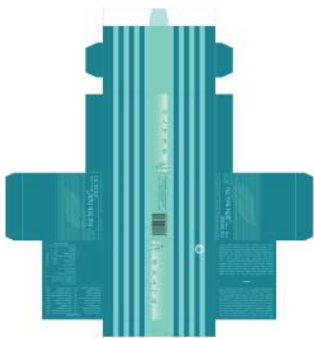


Job Organization and Filtering — A new way to catalog, sort, and find jobs with tags of one or more words. For example, assign tag Press1 to jobs for a certain press. Or tag with customer or product name.

Data Entry with built-in calculator — All numeric fields in Collage can now have a simple mathematical equation entered as well as a number. The result of the equation is then displayed in the field without using a separate calculator. Convert 175 Lines/inch into Lines/cm by entering 175/2.54.

New Gamma Editor — The Gamma Editor has been simplified to make it easier for beginners to create gamma curves. Experts can still build their own fingerprint tables.

Ink Volume information — Customers have been asking to know the ink volume – either Billion Cubic Microns or cm^3/m^2 – of a specific screen and cell size. Now Collage automatically calculates and displays the BCM ink volume for a screen, based on the size of the full cell and channel.

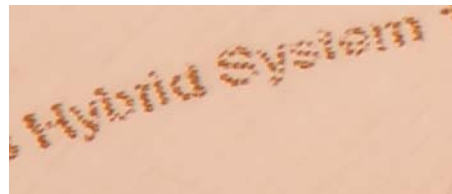


Enhanced Hell Output Support — More Hell features are now supported, including Extreme engraving. All have been added to Defaults Editor and User Preferences. Collage's Hell Output module is all that you need for a mixed OHIO and Hell shop.

Hell Match and DTG Match — Optional feature to engrave cylinders on a Spectrum that exactly emulate Hell screening such that Ohio and Hell cylinders can be mixed without moiré.

DocuCell™ Recording — Select DocuCell areas on the cylinder layout in Collage to be measured during engraving on the Spectrum and be displayed on the Birth Certificate.

And More.... MIS Integration; GHA with Hybrid in step-over mode; support for Windows 10; and much more. Talk with us about how Collage can improve your productivity and quality for all engravers.



If you are ready to move up from your old 700 or 800 engravers to new technology, Collage plus Hybrid and the new Spectrum or Prism will increase your productivity and quality visibly.

Visit our website for more information: www.ohiogt.com

Collage 4.3 or higher is required for some features. Some features mentioned are optional.

OHIO Gravure Technologies Inc
1241 Byers Road
Miamisburg Ohio 45342 USA
Tel. +1 937 439 1582
Fax +1 937 439 1592
sales@OhioGT.com
www.OhioGT.com



A HELIOGRAPH HOLDING COMPANY